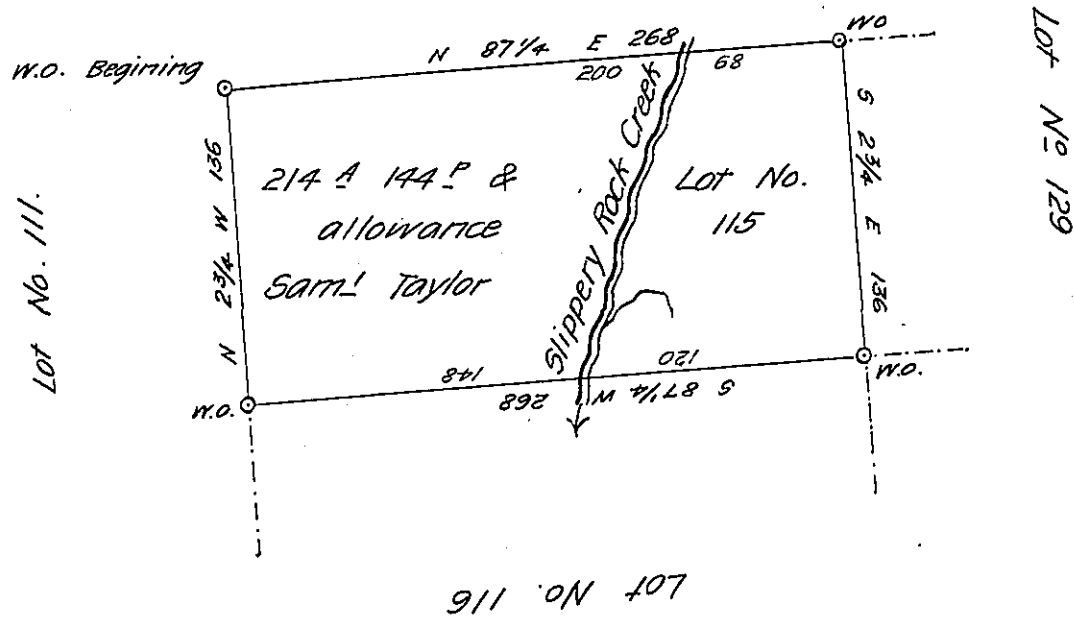


Mercer County Line



The above is the draught of Lot No 115 in the first District of Donation Land Surveyed for Samuel Taylor 30th July 1829 on his settlement and Improvement Situated in Shamango Township in Beaver County Containing Two hundred fourteen acres one hundred forty four perches and allowance

Henry Davis D.S.

To Gabriel Hiester Esq^r

Surveyor General.

IN TESTIMONY that the above is a copy of the original remaining on file in the Department of Internal Affairs of Pennsylvania, made conformably to an Act of Assembly approved the 16th day of February, 1833, I have hereunto set my Hand and caused the Seal of said Department to be affixed at Harrisburg, this seventeenth day of September 1907

Henry Horvath
Secretary of Internal Affairs.